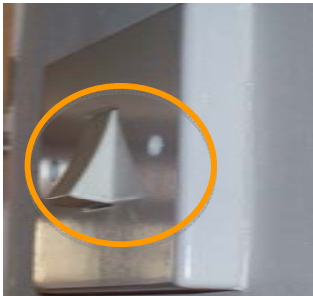




Maths House

Welcome to my house.
Not just where I live but a
world of shapes.

If you look closely in every
room you will find a scalene
triangle with 2 acute angles
and 1 obtuse angle. We
usually refer to them as the
edge of a light switch.



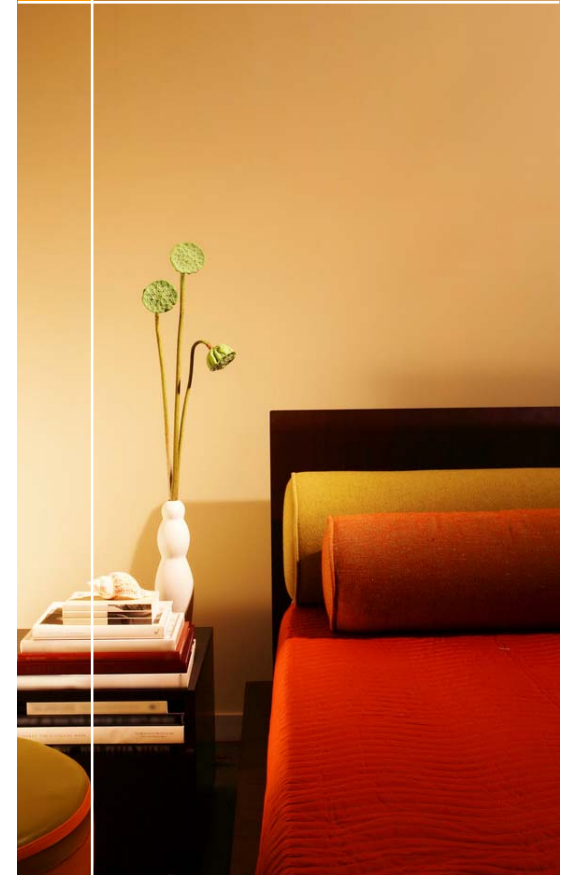
If you go into my dining room
you will see a circular mirror. It
has a 360° angle and has many
lines of symmetry.



Also in the dining room is
the fish tank, an irregular
hexagon with 4 right angles
and 8 obtuse angles. When
it is empty it has 1 vertical
line of symmetry.



When you go upstairs and
get to Mummy and
Daddy's room you will see
a door handle. The reason
this shape is interesting is
because it is convex.





When you enter my living room you will see a wooden chest with 16 right angles and a convex lid. It also has 1 vertical line of symmetry.



Also in the living room, on the windowsill, there is a concave candle holder.



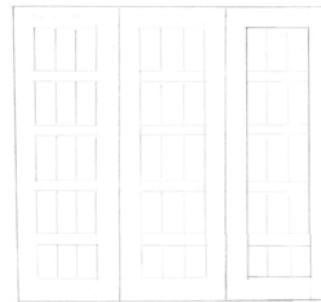
The most common polygon in everybody's living room is probably the T.V screen. Our T.V has 4 right angles and a vertical and horizontal line of symmetry.



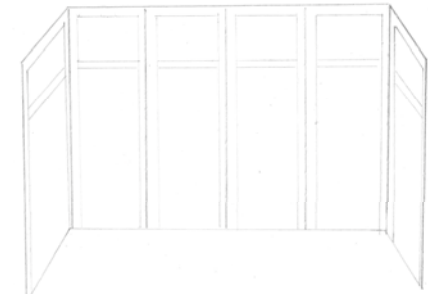
NOW FOR SOME AMAZING ARRAYS



Upstairs, in my bedroom, on the back of my chair there is 3-3 array



The conservatory doors are each made up of a 3x5 array. There are 3 doors with a total of 192 right angles and each 3x5 array is congruent and symmetrical.



The living room windows make up a 6x2 tessellated array.

